



MAPPING

WITH ACCESSIBILITY IN MIND

@nagmay



Mapping with Accessibility in Mind

@nagmay

Good maps show...

1. Relationships

2. Place, scale, distance

3.

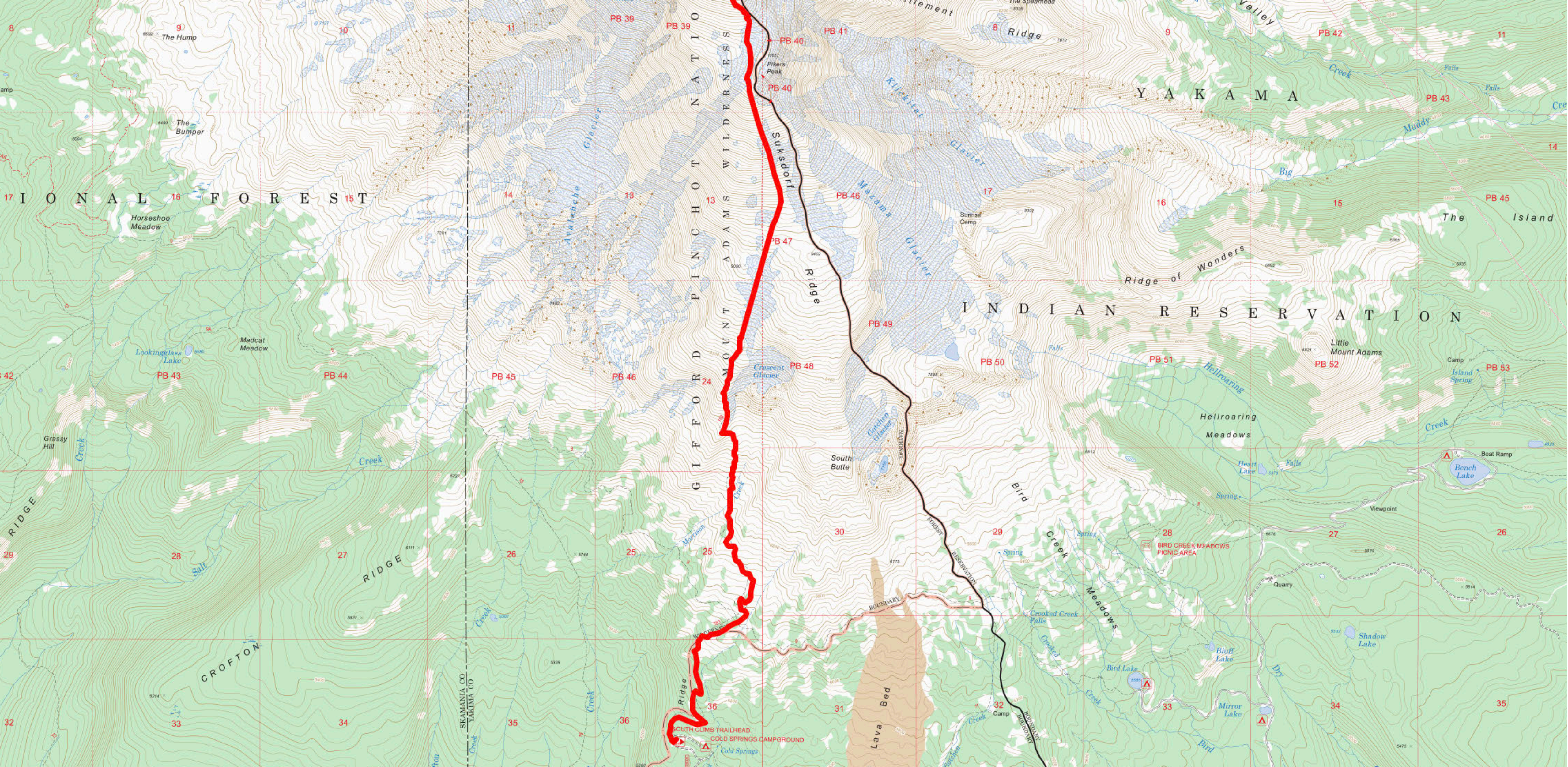
Mapping with Accessibility in Mind

@nagmay



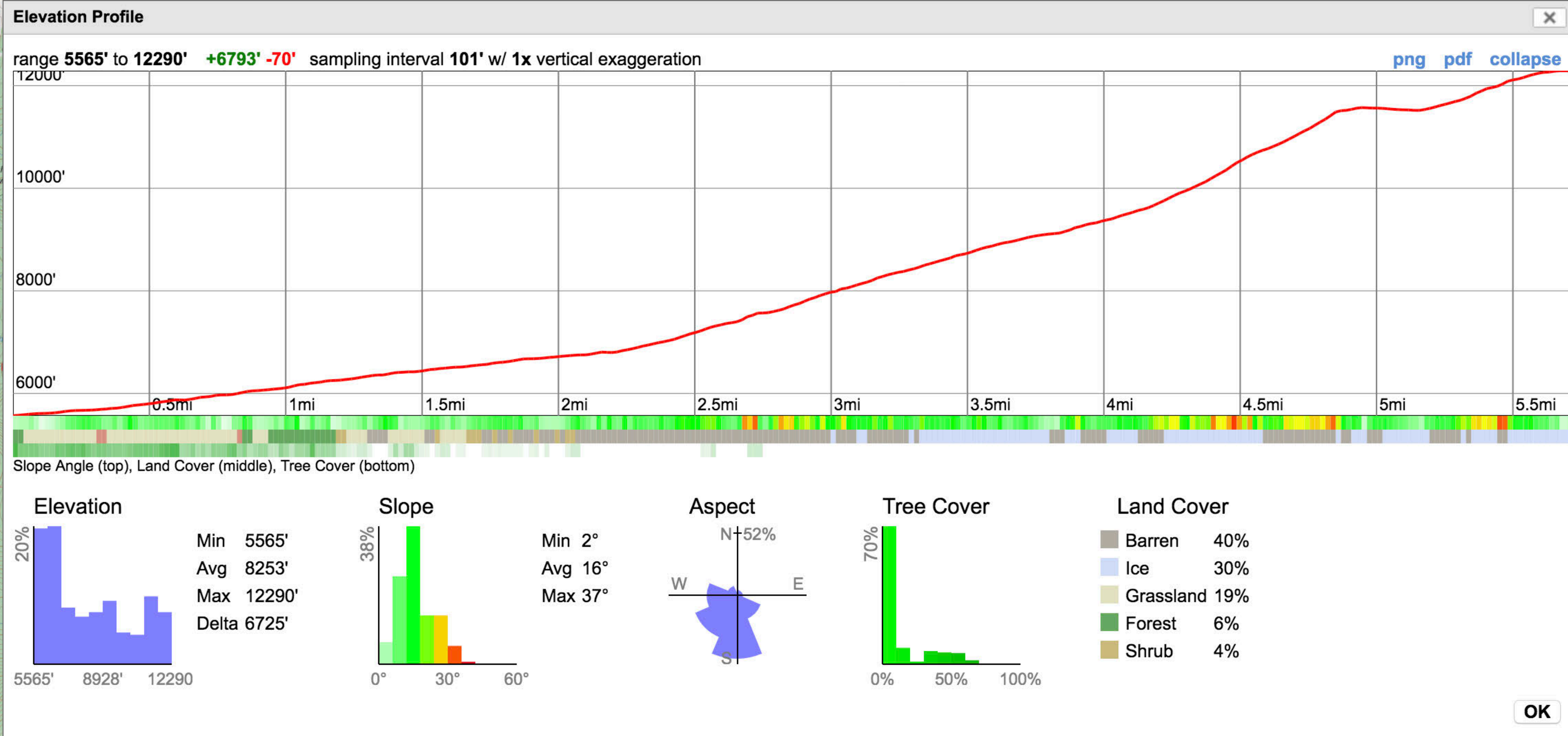
Mapping with Accessibility in Mind

@nagmay



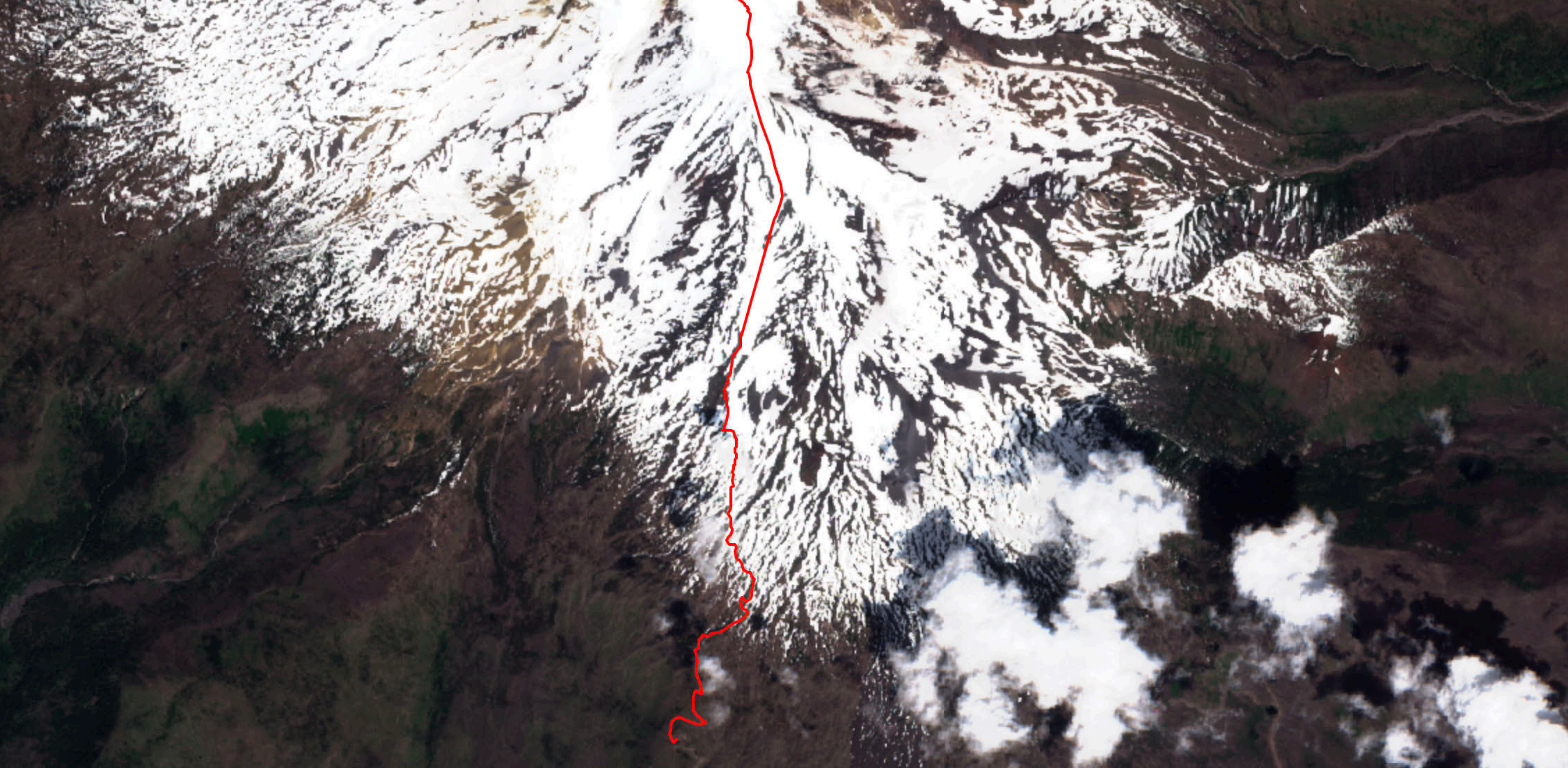
Mapping with Accessibility in Mind

@nagmay



Mapping with Accessibility in Mind

@nagmay



Mapping with Accessibility in Mind

@nagmay



Good maps show...

1. Relationships

2. Place, scale, distance

3. Accurate, up-to-date info

Overview

- Evolution of maps at PCC
- Integrating maps into WP
- Considering accessibility



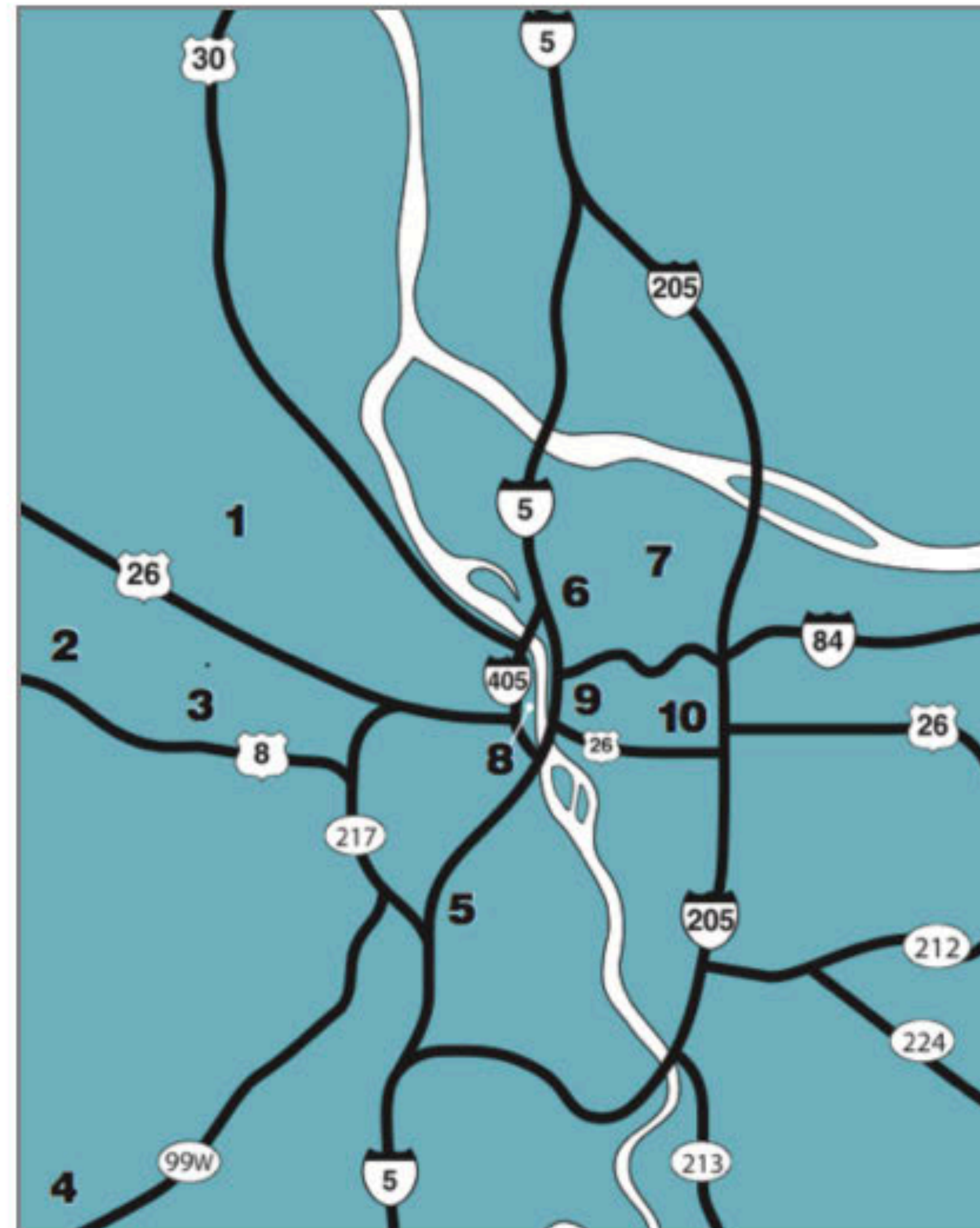
Mapping with Accessibility in Mind

@nagmay

2
HILLSBORO CENTER
 775 SE Baseline St.
TriMet Bus: 47, 48, 57
MAX: Blue Line

3
WILLOW CREEK
 241 SW Edgeway Dr.
TriMet Bus:
 47, 48, 52, 59, 88
MAX: Blue Line

4
NEWBERG CENTER
 135 Werth Blvd.
Yamhill County Transit:
 Provides shuttle to Tigard




7
PORTLAND METROPOLITAN WORKFORCE TRAINING CENTER
 5600 NE 42nd Ave.
TriMet Bus: 72, 75

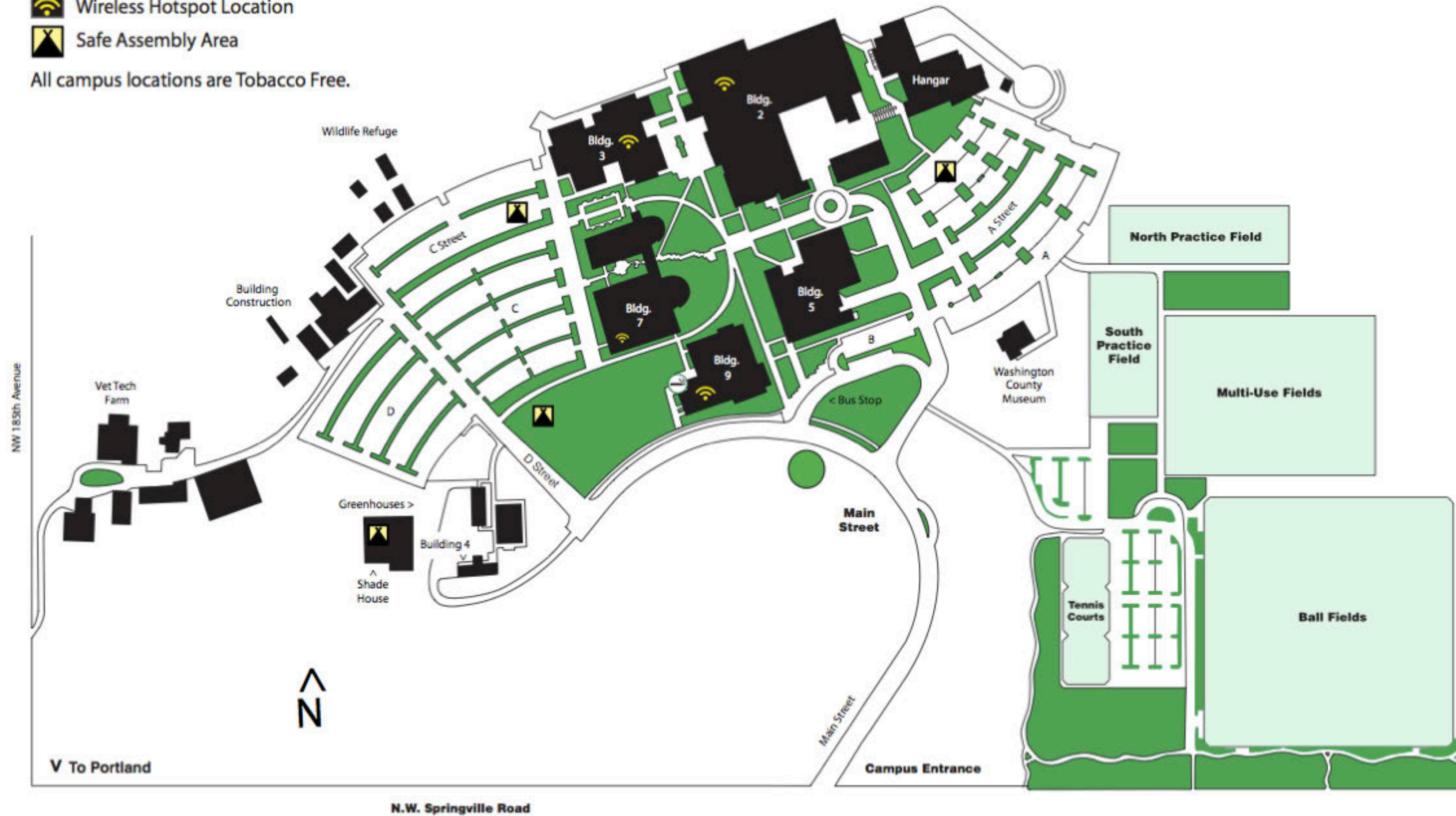
8
DOWNTOWN CENTER
 722 SW 2nd Ave.
TriMet Bus: 15, 51
MAX: Blue & Red Lines

9
CLIMB CENTER
 (FORMERLY CENTRAL PORTLAND WORKFORCE TRAINING CENTER)
 1626 SE Water Ave.
TriMet Bus:
 4,6,10,14,31,32,33,41
 (bus stop is one block north on the Hawthorne Bridge)

 Wireless Hotspot Location

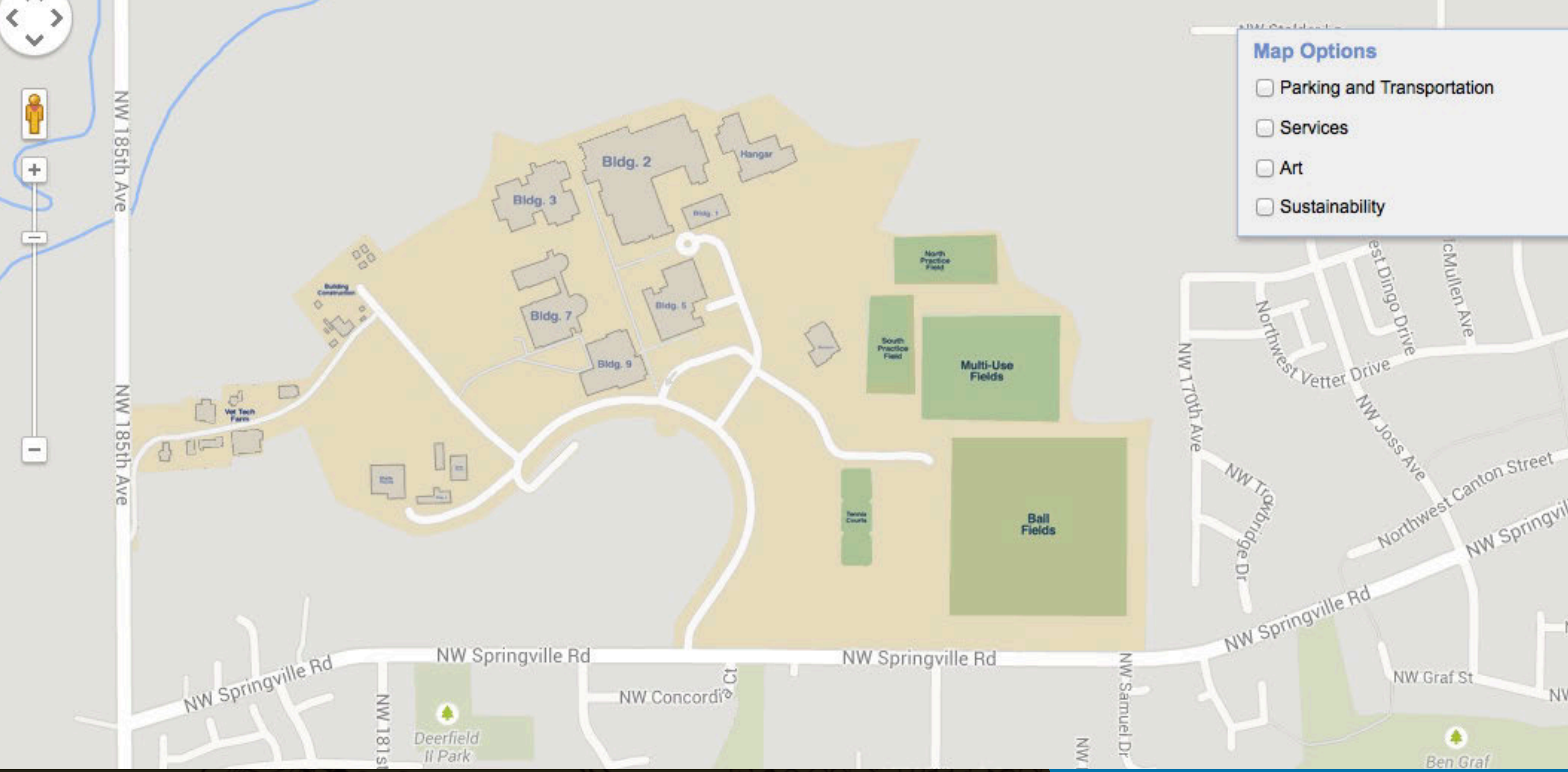
 Safe Assembly Area

All campus locations are Tobacco Free.



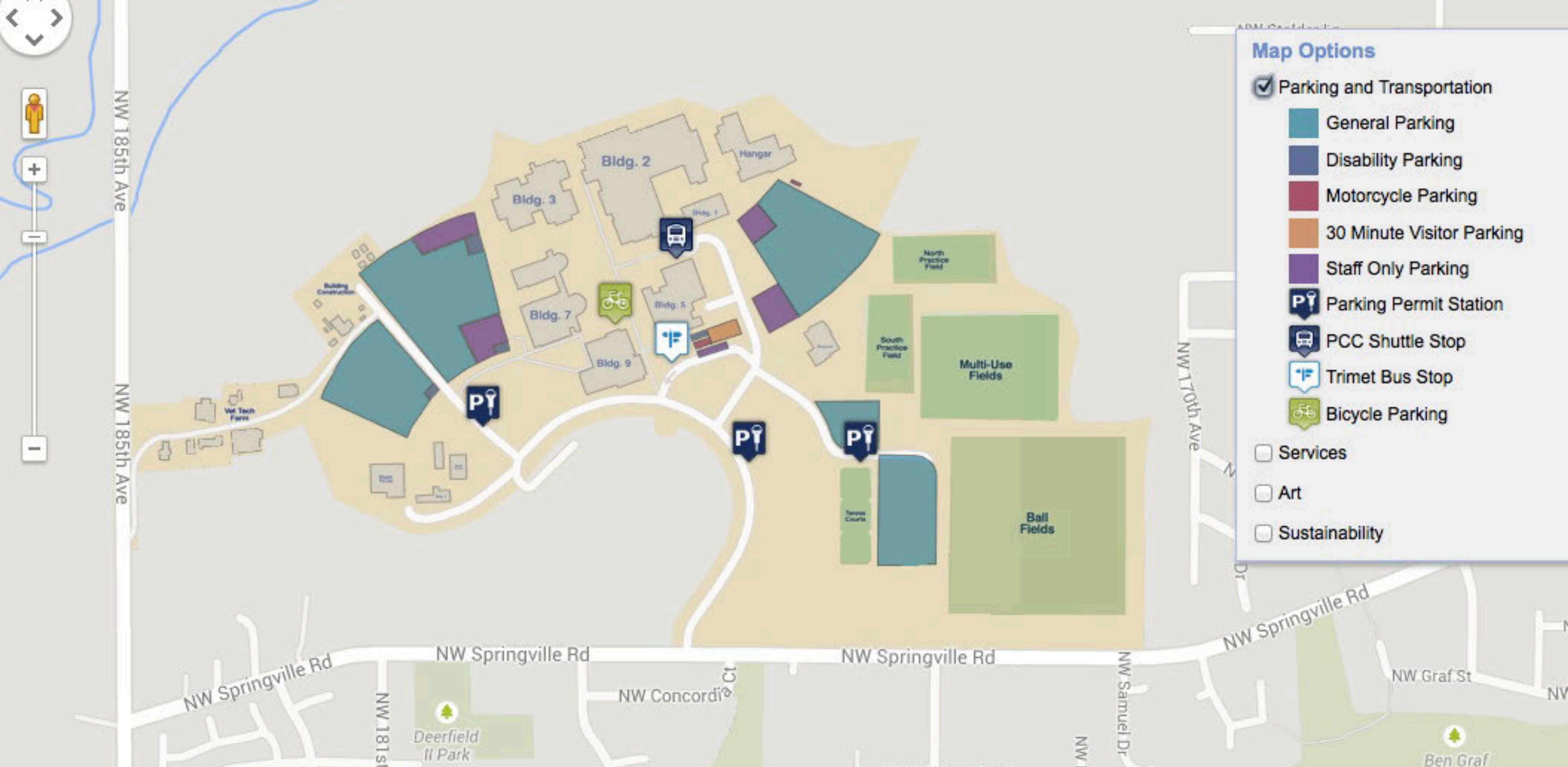
Mapping with Accessibility in Mind

@nagmay



Mapping with Accessibility in Mind

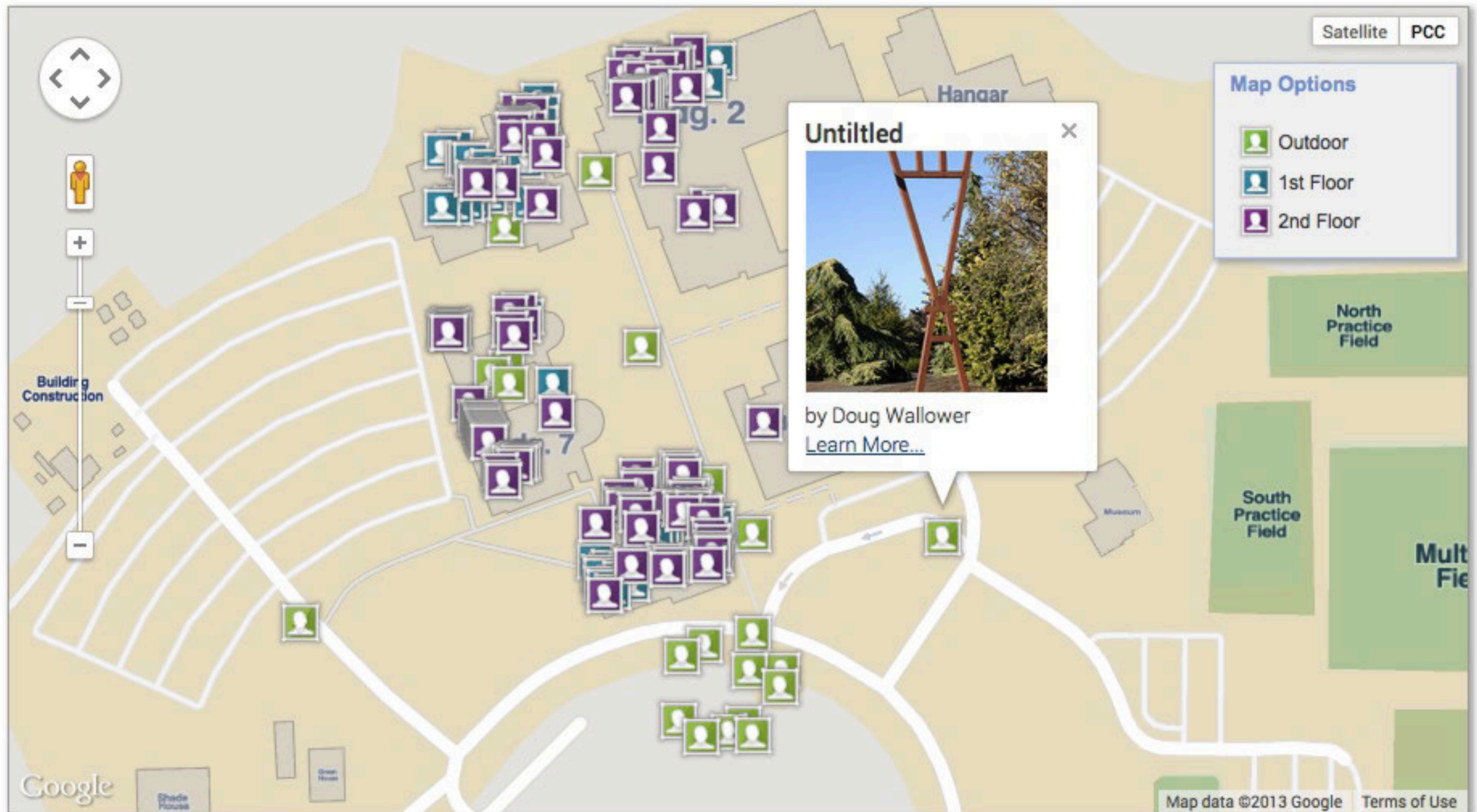
@nagmay



Mapping with Accessibility in Mind


@nagmay


```
266
267 <Placemark>
268   <name>Romona Falls</name>
269   <description>
270     <![CDATA[
271   </description>
272   <styleUrl>#art_outdoor</styleUrl>
273   <Point>
274     <coordinates>-122.860939,45.567619,0.000000</coordinates>
275   </Point>
276   <ExtendedData xmlns:pcc_art="http://www.pcc.edu/about/art/">
277     <pcc_art:id>1694</pcc_art:id>
278     <pcc_art:title>Romona Falls</pcc_art:title>
279     <pcc_art:artist>West, Bruce</pcc_art:artist>
280     <pcc_art:medium>Sculpture - Stainless Steel Fountain</pcc_art:medium>
281     <pcc_art:height>74</pcc_art:height>
282     <pcc_art:width>105</pcc_art:width>
283     <pcc_art:added>11/26/2003</pcc_art:added>
284     <pcc_art:campus>Rock Creek Campus</pcc_art:campus>
285     <pcc_art:location>Courtyard</pcc_art:location>
286     <pcc_art:details><![CDATA[<p>If you've ever visited Romona Falls on the
```

Mapping with Accessibility in Mind

@nagmay



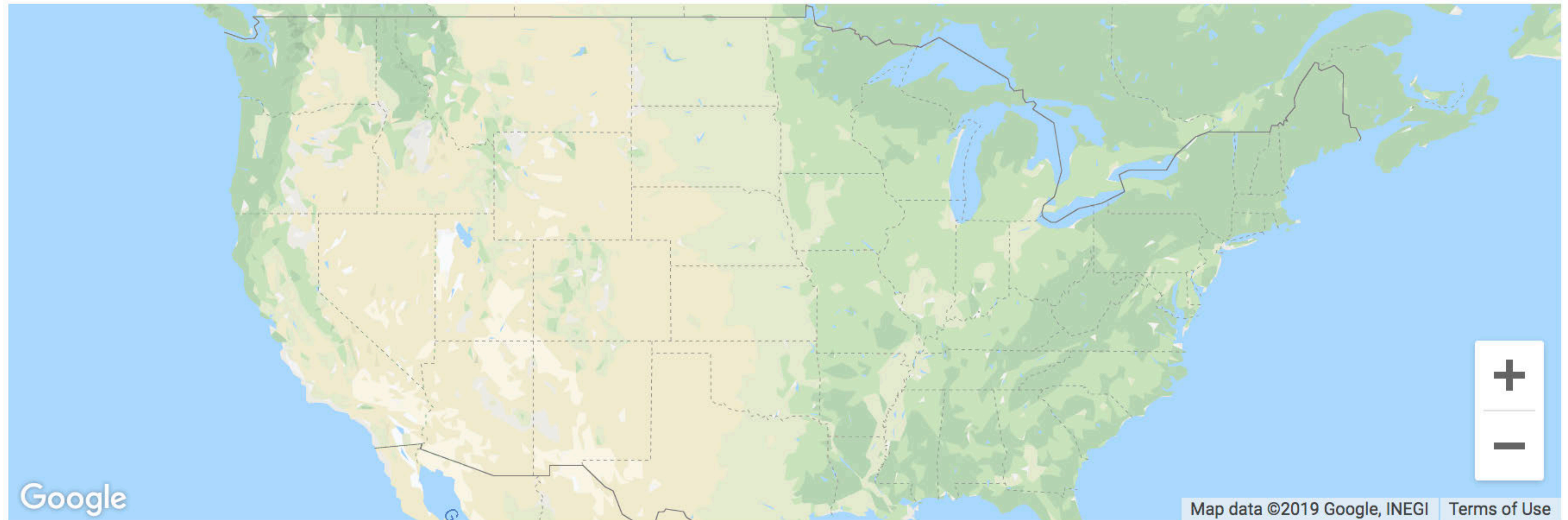
Why are we treating map content differently?

Mapping with Accessibility in Mind

@nagmay

Maps in WordPress

- Easy to create/update
- Locations customized
- Marker types customized
- Require info needed to #a11y
- Floor plans



Choose a location:

Southeast

Community Hall Annex (COMX)

1





Choose a location:

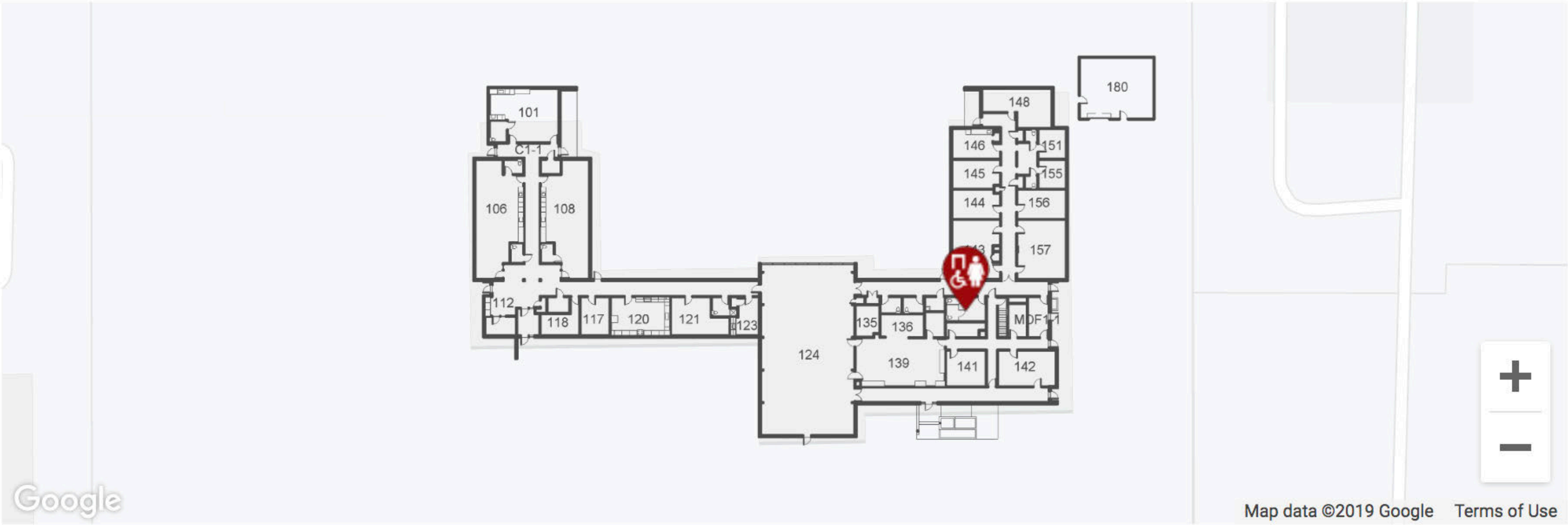
Southeast



Community Hall Annex (COMX)



1



Latitude , longitude:

45.506116

, -122.581497

Use current location

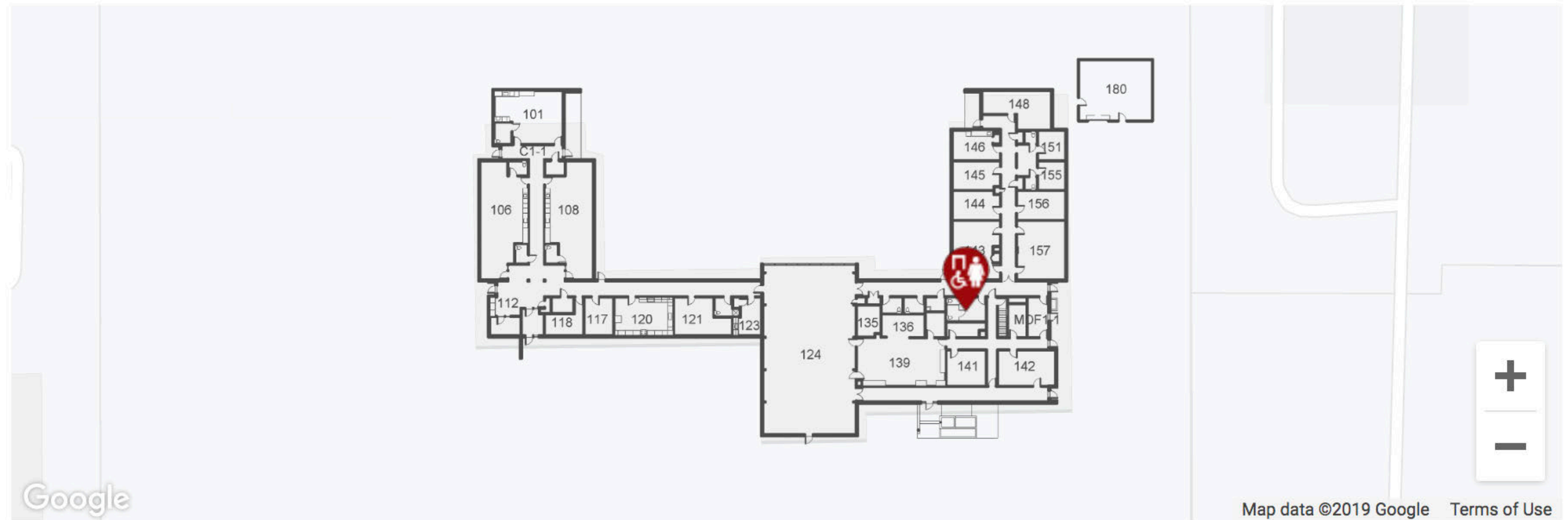
Place

Choose a location:

Southeast

Community Hall Annex (COMX)

1



Latitude , longitude:

45.506116

, -122.581497

Use current location

Alternative text
description of location:

In the north hallway just south of room 143

For example: "On the south wall, across from room CC123"

Mapping with Accessibility in Mind

@nagmay

Mark

Mark type:

Women's restroom - fully accessible



Optional title:

Optional text:

For example: "Keypad access code available at various locations, sign on door."

Optional link:



Placemarks Settings

My Custom Settings

Enter your settings below:

Marker Types (JSON)

Locations (JSON)


```
"types": [  
  {  
    "name": "Default",  
    "src": "/icons/defaults/default.png"  
  },  
  {  
    "name": "Safe assembly area",  
    "src": "/icons/safe-assembly-area.png"  
  },  
  ...  
]
```

Mark type:

Safe assembly area ▴ ▾




```
"locations": [  
  {  
    "name": "Cascade",  
    "lat": 45.563282,  
    "lng": -122.673457,  
    "zoom": 17  
  },  
  {  
    "name": "Sylvania",  
    "slug": "sy",  
    ...  
  }  
]
```

Choose a location:

Sylvania




```
"locations": [  
  ...  
  {  
    "name": "Sylvania",  
    "slug": "sy",  
    "locations": [{  
      "name": "Amo De Bernardis College Ctr (CC)",  
      "lat": 45.437956,  
      "lng": -122.731940,  
      "zoom": 19,  
      "description": "The College Center Building is large ... "  
    }  
  ]  
]
```

Choose a location:

Sylvania



Amo De Bernardis College Ctr (CC)




```
"locations": [  
  ...  
  {  
    "name": "Sylvania",  
    "slug": "sy",  
    "locations": [{  
      "name": "Amo De Bernardis College Ctr (CC)",  
      "locations": [{  
        "name": "1",  
        "overlay": "/floorplans/sy-cc-1.png",  
        ...  
      }  
    ]  
  }  
]
```

Choose a location:

Sylvania

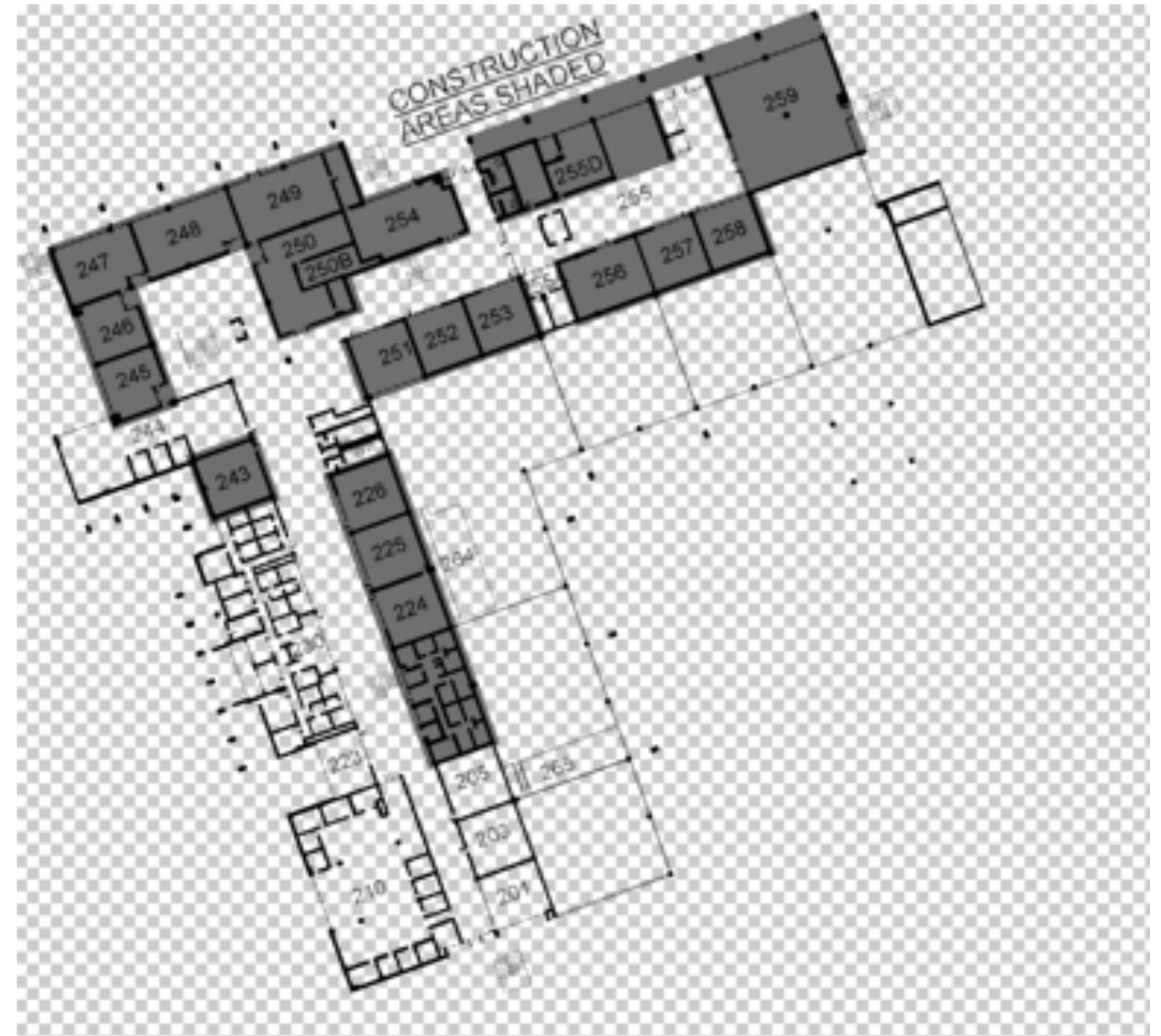
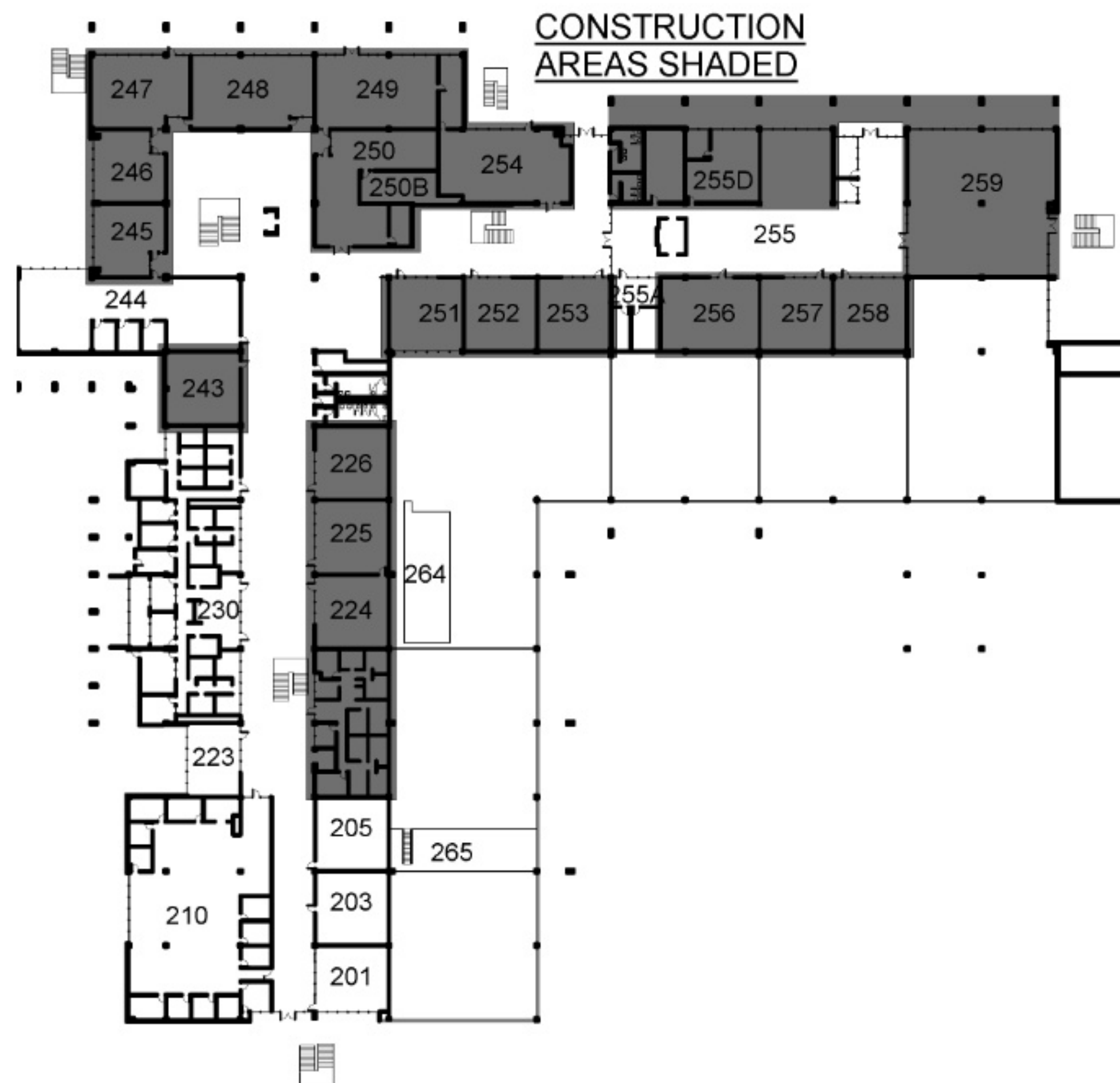


Amo De Bernardis College Ctr (CC)



1





Mapping with Accessibility in Mind

@nagmay



Map data collected Now what?

pcc.edu/accessmap

Mapping with Accessibility in Mind

@nagmay

Feature

All accessibility features featur


Campus

Southeast


Building

Community Hall Annex (COMX


The Community Hall Annex (CHAX) is located behind (north of) the Administration Building on SE 80th Ave. The front of the building consists of a delivery entrance and the main entrance, which is in the left corner as you face the building. The entrance opens to a long hall that leads to Community Hall.



Men's restroom - fully accessible
In the north hallway just east of room 135



Men's restroom - fully accessible
North public hallway



All-user restroom - fully accessible
Single stall in the north hallway east of room 124

1st

turn icons off

180

148

146

151

155

56

157

121

123

124

135

136

139

141

142

MDF1

All-user restroom - fully accessible

Single stall in the north hallway east of room 124

[Learn more »](#)

Considering accessibility

- Methods of interaction
- Alt text everything
- Other assistive devices

Feature

All accessibility features featur


Campus

Southeast


Building

Community Hall Annex (COMX


The Community Hall Annex (CHAX) is located behind (north of) the Administration Building on SE 80th Ave. The front of the building consists of a delivery entrance and the main entrance, which is in the left corner as you face the building. The entrance opens to a long hall that leads to Community Hall.



Men's restroom - fully accessible
In the north hallway just east of room 135



Men's restroom - fully accessible
North public hallway



All-user restroom - fully accessible
Single stall in the north hallway east of room 124

1st

turn icons off

180

148

146

151

155

56

157

121

123

124

135

136

139

141

142

MDF1

All-user restroom - fully accessible

Single stall in the north hallway east of room 124

[Learn more »](#)

Feature

All accessibility features featur

Campus

Southeast

Building

Community Hall Annex (COMX

The Community Hall Annex (CHAX) is located behind (north of) the Administration Building on SE 80th Ave. The front of the building consists of a delivery entrance and the main entrance, which is in the left corner as you face the building. The entrance opens to a long hall that leads to Community Hall.

Men's restroom - fully accessible

In the north hallway just east of room 135

Men's restroom - fully accessible

North public hallway

All-user restroom - fully accessible

Single stall in the north hallway east of room 124

1st

turn icons off

180

148

146

151

155

56

157

121

123

124

135

136

139

141

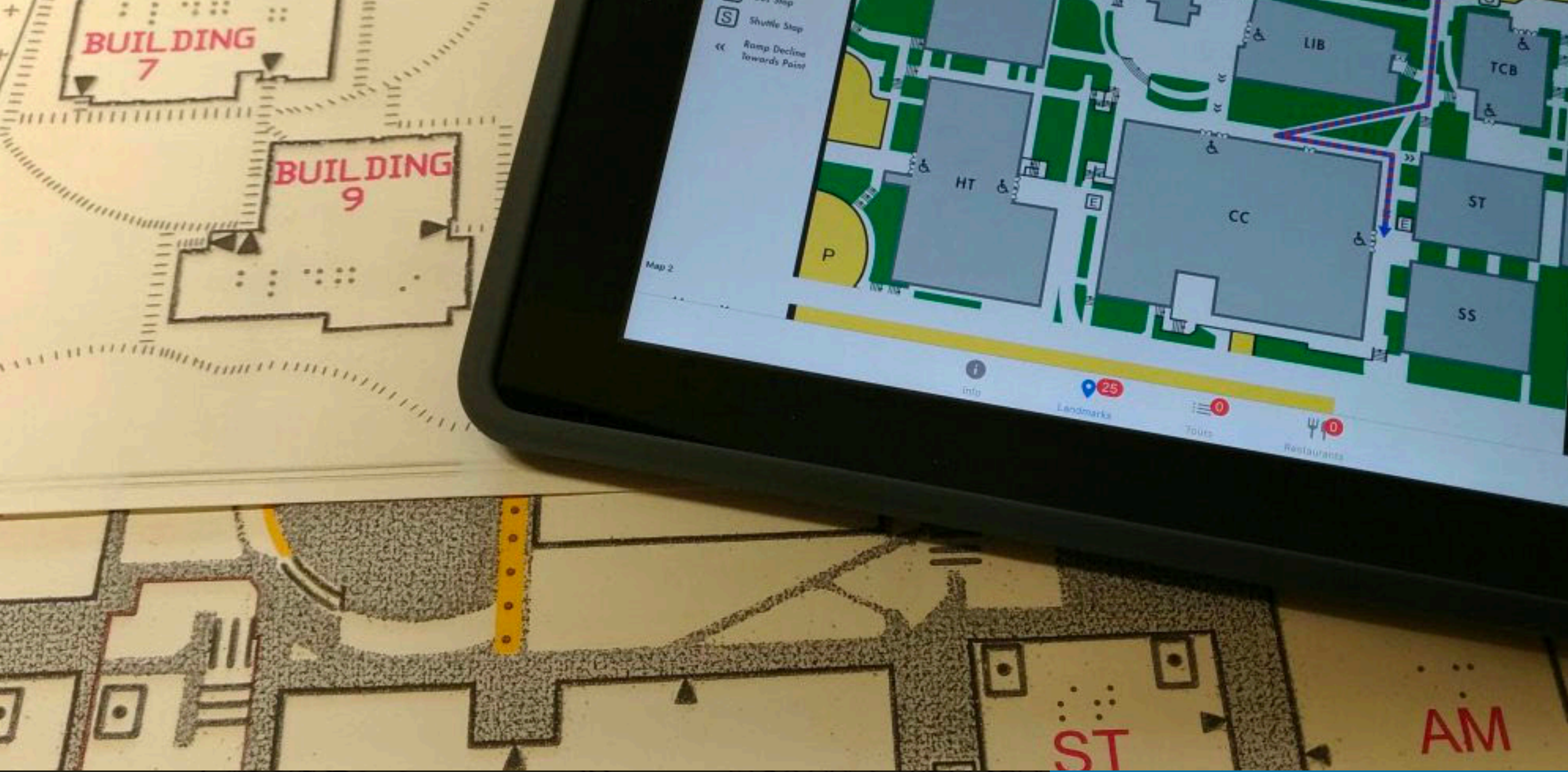
142

MDF1

All-user restroom - fully accessible

Single stall in the north hallway east of room 124

[Learn more »](#)



Mapping with Accessibility in Mind

@nagmay

What's next

- Open Street Maps
- Search and filter
- Classrooms locations

Thanks!

Questions: @nagmay

Try it out: pcc.edu/accessmap

Feedback: 2019.wpcampus.org/feedback/mapping-with-accessibility-in-mind/